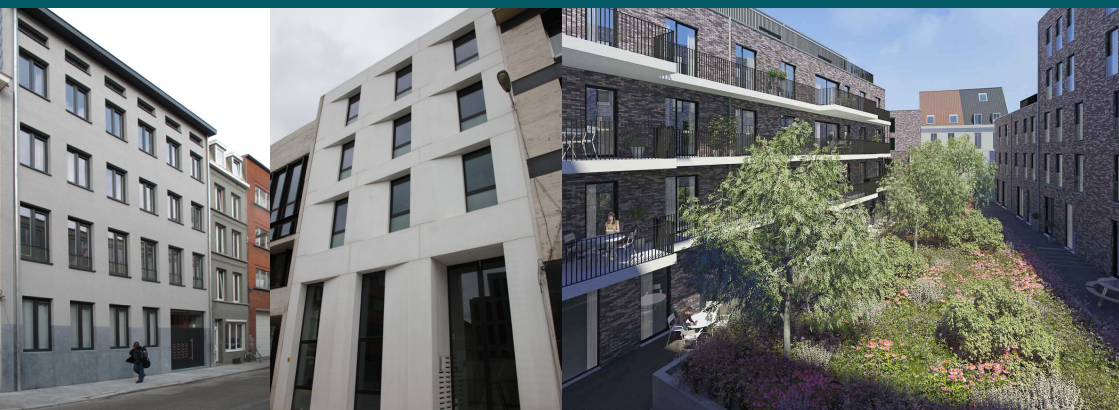


# ITM STUDENT RESIDENCES

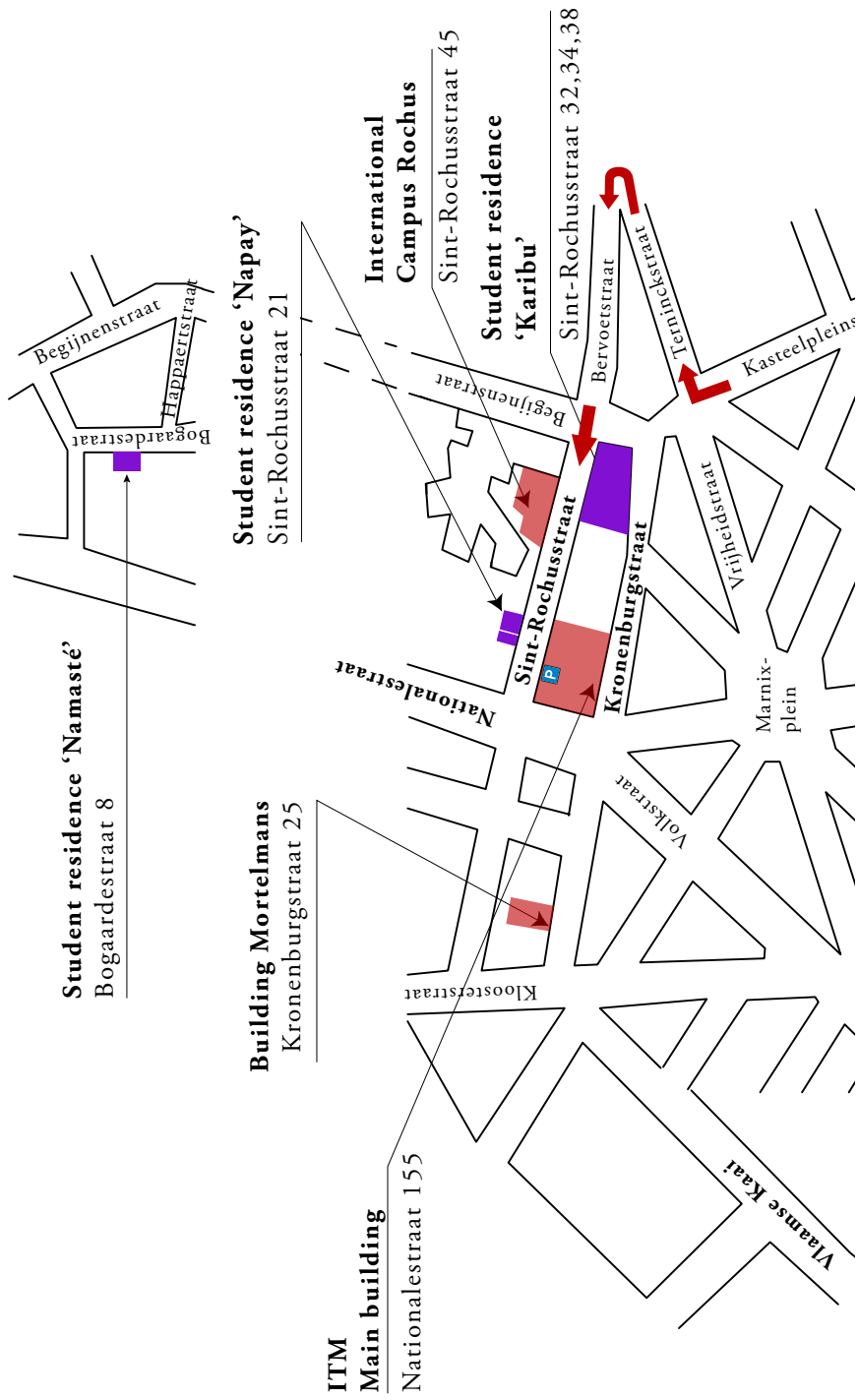


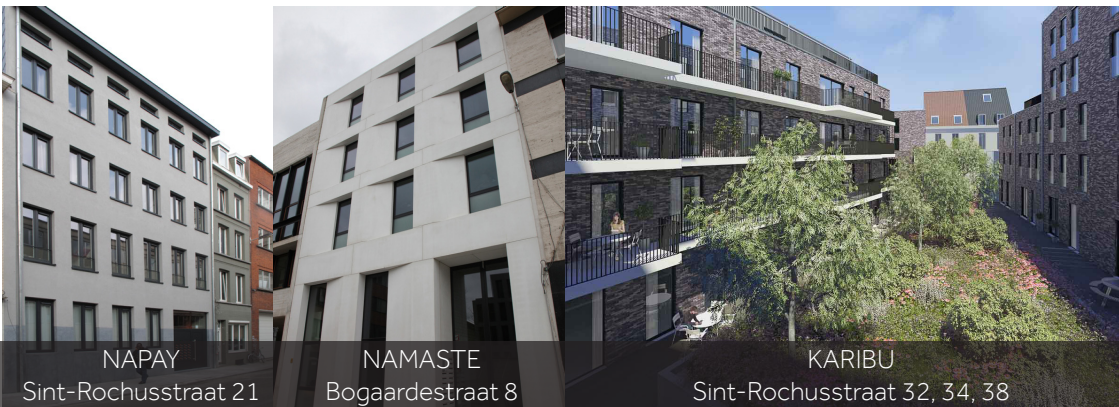
Sint-Rochusstraat 32, 34 & 38 (Karibu)  
Sint-Rochusstraat 21 (Napay)  
Bogaardestraat 8 (Namasté)

2000 Antwerpen



**INSTITUTE  
OF TROPICAL  
MEDICINE**  
ANTWERP





NAPAY

Sint-Rochusstraat 21

NAMASTE

Bogaardestraat 8

KARIBU

Sint-Rochusstraat 32, 34, 38

## ITM STUDENT RESIDENCES

Contact : Student Support

Tel : +32 (0)3 345 54 84

E-mail : [studentsupport@itg.be](mailto:studentsupport@itg.be)

### **Studentenondersteuning – Student Support**

Campus ROCHUS

Sint-Rochusstraat 43

2000 Antwerp

### **Postal address**

Nationalestraat 155

2000 Antwerp

## KARIBU: Sint-Rochusstraat 32, 34, 38

### Exterior



### Room with private bathroom and shared kitchen



### Studio with private kitchen and private bathroom



### Family room with private kitchen and private bathroom



## CAPACITY

- 63 rooms with private bathroom, some with balcony and garden view
- 3 studios (29 m<sup>2</sup>) with private facilities (bathroom and kitchenette)
- 3 family rooms (44 m<sup>2</sup>) with private facilities (bathroom and kitchenette)
- 10 shared equipped kitchens
- Washing machine, dryer and iron at your disposal
- Terrace (not all rooms)

## ROOMS

- Single bed with bedside table
- Desk with chair, wardrobe, bookshelves
- WIFI internet
- Television
- Bathroom with toilet, shower and laundry basket
- Refrigerator in the room
- Towels, bedding and duvet are provided
- Fortnightly cleaning service

A double bed in the studios; an additional sofa bed in the family rooms

## PRICES

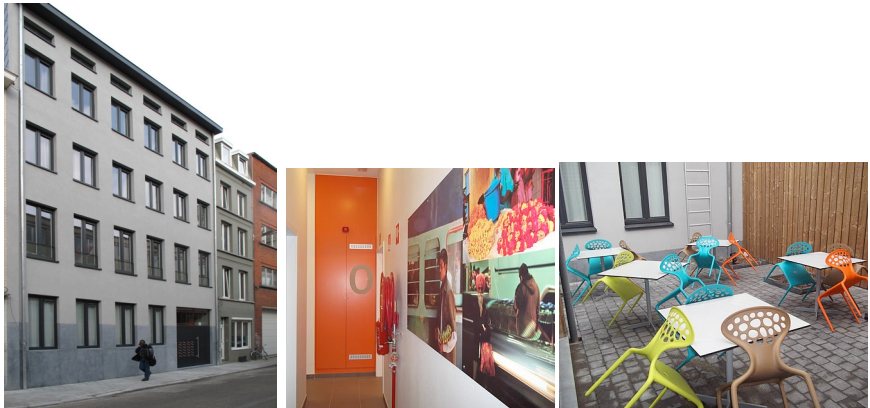
	KARIBU > 3 MONTHS		
Type	Monthly price	Weekly price	Daily price
Room single bed	€ 724	€ 242	€ 48
Room double bed	€ 770	€ 257	€ 52
Studio double bed	€ 842	€ 281	€ 56
Large family room	€ 997	€ 332	€ 66
Obligatory administration cost of € 150 per rental period. Minimum stay of 4 nights.			

	<b>KARIBU ≤ 3 MONTHS</b>		
Type	Monthly price	Weekly price	Daily price
Room single bed	€ 798	€ 266	€ 53
Room double bed	€ 845	€ 282	€ 56
Studio double bed	€ 927	€ 309	€ 62
Large family room	€ 1098	€ 366	€ 73
Obligatory administration cost of € 150 per rental period. Minimum stay of 4 nights.			

These prices are all-in prices, including fortnightly cleaning service.  
ITM students are granted 10% discount on the rental prices.



Exterior, entrance and terrace



Room and private bathroom



Kitchen & sitting area



## CAPACITY

- 24 rooms with private bathroom
- 3 common equipped kitchens
- Washing machine, dryer and iron at your disposal
- Communal terrace

## ROOMS

- Single bed with bedside table
- Desk with chair, wardrobe, bookshelves
- WIFI internet
- Television
- Bathroom with toilet, shower and laundry basket
- Towels, bedding and duvet are provided
- Refrigerator in the room
- Fortnightly cleaning service

## PRICES

	Monthly price	Weekly price	Daily price
Stay > 3 months	€ 700	€ 234	€ 47
Stay ≤ 3 months	€ 770	€ 257	€ 52
Obligatory administration cost of € 150 per rental period. Minimum stay of 4 nights.			

These prices are all-in prices, including fortnightly cleaning service.  
ITM students are granted 10% discount on the rental prices.

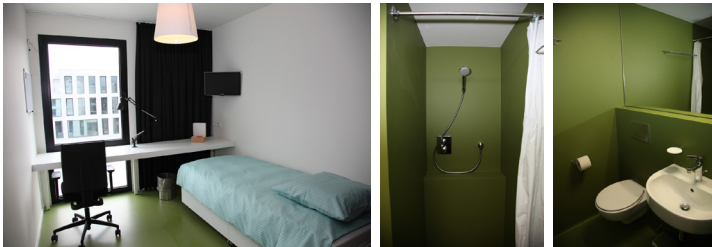


# NAMASTE: Bogaardestraat 8

Exterior & entrance



Room and private bathroom



Kitchen



## CAPACITY

- 16 rooms with private bathroom
- 2 duplex flats with private facilities (bathroom and kitchenette)
- 2 shared equipped kitchens
- Washing machine, dryer and iron at your disposal
- Terrace

## ROOMS

- Single bed
- Desk with chair, wardrobe, bookshelves
- WIFI Internet
- Television
- Bathroom with toilet, shower and laundry basket
- Refrigerator in the room
- Towels, bedding and duvet are provided

The duplex flats have a double bed

## PRICES

### BOGAARDESTRAAT 8 NAMASTE ROOMS

	Monthly price	Weekly price	Daily price
Stay > 3 months	€ 600	€ 201	€ 40
Stay ≤ 3 months	€ 661	€ 220	€ 44

### BOGAARDESTRAAT 8 NAMASTE STUDIO

	Monthly price	Weekly price	Daily price
Stay > 3 months	€ 842	€ 281	€ 56
Stay ≤ 3 months	€ 927	€ 309	€ 62

Obligatory administration cost of € 150 per rental period.  
Minimum stay of 4 nights.

These prices are all-in prices.

ITM students are granted 10% discount on the rental prices.

There is no cleaning of the rooms in this facility. The mutual parts like the kitchen will be cleaned on a regular basis by our cleaning service.

## Reservation

To make a reservation, please send an email to [studentsupport@itg.be](mailto:studentsupport@itg.be) with following information:

- Name of guest/student
- Date of arrival and departure
- Type of room

### ATTENTION!

In case of a delay or cancellation, following rules will be applied:

- The administration cost of € 150 is always non-refundable.

The rental agreement can be terminated by the tenant before the rental agreement comes into effect. If this happens more than three months before the start of the rental agreement, it is free of charge. If the tenant terminates the lease less than three months before it comes into effect, the student has to pay a penalty equal to two months' rent to the landlord.

In case the student cancels the lease because of cancellation of the studies and he/she provides us with an attestation from the university/institute, no penalties will be applied.

In case the student terminates the lease before the end date because of termination of the studies and he/she provides us with an attestation from the university/institute, only the effective stay will be charged.

Different terms and conditions apply to group reservations.  
For more information, please contact [studentsupport@itg.be](mailto:studentsupport@itg.be).

## Some house rules

- Smoking is prohibited in the whole building.
- No pets are allowed.
- Keys can be collected and returned to the Student Support during office hours (Monday-Friday 8:30 a.m. - 5:00 p.m.). If you arrive before or after office hours, you can collect the key from the security guard (24/7).

Prices valid as from July 2023